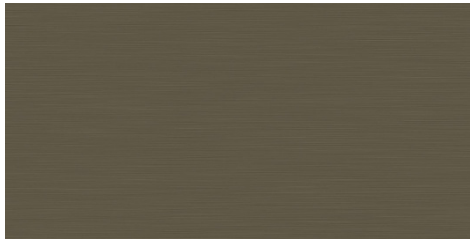




Champagne Metal Furniture Wrapping Film Specification Sheet



Product Details

Champagne Metal Furniture Wrapping Film is a lightly textured metal effect vinyl surface covering perfect for wall, cabinets, tables, work surfaces and other home furnishings.

These wrapping films are perfect for enhancing the aesthetic of your property without needing to purchase new expensive furniture.

Flammability Rating

This product meets **Class B1 C, s2, d0**, as specified in **BS EN 13501-1:2018**.

Specification

Product Code	PM 977
Film Type	Polymer Vinyl
Adhesive Type	Acrylic with Air Release
Usage	Interior
Available Roll Width(s)	122cm / 48"
Thickness	210 micron
Install Temperature	16-25 degrees

Installation & Warranty

Installation

- Unroll the film, leave for 1 hour.
- Clean surface and edges with a degreaser. Ensure surface is smooth and free from grease, dust, dirt and oil.

Warranty

This product will be free from defects in material and manufacture for a period of two (2) years from the date of installation. See warranty information for specific details.

Product Construction

Face Film

180 micron Polymer Calendered

Adhesive

Acrylic adhesive with air release effect.

Release Liner

Silicone/Paper

Contact Information

Surface Designs

Tel: +44 (0) 800 970 6366

Email: sales@surfacedesigns.com

Web: www.surfacedesigns.com

Unsuitable Surfaces

- Rough/Loose
- Walls with dents, cracks, or scratches
- Paints with silicones and/or chlorinated waxes.
- Graffiti resistant paint
- Textured paints
- Textured wallpaper
- Latex paints on wood surfaces
- Oily primers or enamel paints
- Weathered painted surfaces
- Paint coatings that are not completely dry