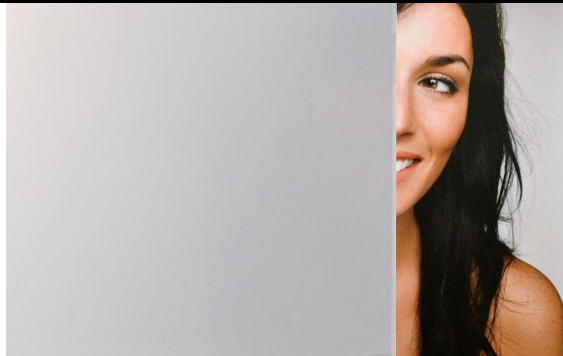


## SOLYX®

### Silver Matte Window Film Specification Sheet



#### Product Details

**Silver Matte** is a smooth, silver tinted, translucent polyester film with a matte finish. This film obscures visibility while allowing good light transmission.

#### Flammability Rating

This product meets **Class B, s1, d0**, as specified in **BS EN 13501-1:2018**.

**LEED Credit EQ 4.1 Low Emitting Materials, Adhesives & Sealants** This product has zero VOC content according to 40 CFR 59, Subpart D (EPA method 24).

#### Specification

<b>Product Code</b>	SXWF-SM
<b>Film Type</b>	Polyester
<b>Adhesive Type</b>	Pressure-sensitive
<b>Usage</b>	Interior or Exterior
<b>Available Roll Width(s)</b>	76.2cm / 30"
<b>Thickness</b>	50 micron
<b>Visible Light Transmission</b>	22%
<b>UV Transmission</b>	0%
<b>IR Transmission</b>	63%
<b>Visible Light Reflection</b>	22%

#### Installation & Warranty

##### Installation

Installation should be in accordance with the manufacturer's installation instructions. This film is applied using the same methods used for installing window films.

##### Warranty

This product will be free from defects in material and manufacture for a period of five (5) years from the date of installation. See warranty information for specific details.

#### Product Construction

##### Face Film

50 micron Polyester

##### Adhesive

Clear, Pressure-sensitive

##### Release Liner

Silicone Coated

#### Contact Information

Surface Designs

Tel: +44 (0) 800 970 6366

Email: [sales@surfacedesigns.com](mailto:sales@surfacedesigns.com)

Web: [www.surfacedesigns.com](http://www.surfacedesigns.com)